

ANNUAL REPORT 2019



BABSON OLIN WELLESLEY
THREE COLLEGE COLLABORATION





Executive Summary

Artificial Intelligence

Throughout the year, Artificial Intelligence was a central focus of the BOW Faculty Steering Committee. The Provosts convened two meetings of faculty and staff focused on Artificial Intelligence, Machine Learning, Data Science, and their Societal Impact. As a result of the interest displayed in these meetings, a special call for AI focused Presidential Innovation Grants was made in Spring 2019. Three groups were awarded grants to pursue work across the three campuses in this space. We look forward to continuing this focus in the 2019-20 school year.

Cross-Registration

Cross-registration remains popular across the three campuses. 340 students cross registered during the 2018-19 school year, representing a decrease from the previous year. Olin students continue to cross-register at higher rates than Wellesley and Babson students. The BOW Faculty Steering Committee is investigating ways to make students more aware of cross-registration opportunities in the future.

Sustainability Certificate Program

Under the leadership of Program Director Alison Wood, the Sustainability Certificate Program continues to thrive. The Introduction to Sustainability course reached the maximum enrollment of 45 students across the three campuses. In 2019, the Program has 7 certificate recipients (one to be completed in December) and at least ten students in the pipeline.

Weissman Foundry

In the Weissman Foundry's inaugural year, BOW and the Weissman Foundry leadership worked together to strengthen their relationship. BOW partnered with the Foundry for a student *Winter Study Break* program and various faculty and staff events during the year. We look forward to growing this partnership in the future.

Updated Website

In 2019, the BOW website was updated to allow people to more easily access the information and resources they need to take advantage of all BOW has to offer. The newly designed site provides information on cross-registration, including a list of featured courses for cross-registration, funding opportunities, and resources across the 3 campuses. Please visit www.bow3colleges.org.

BOW Leadership 2018-19



President: Kerry Healey

Provost: Mark Rice

Faculty Representative: Rick Cleary

Student Ambassador: Eric Li



Olin College
of Engineering

President: Richard Miller

Provost: Vincent Manno

Faculty Representative: Jean Huang

Student Ambassador: Anusha Datar



President: Paula Johnson

Provost: Andrew Shennan

Faculty Representative: Lyn Turbak

Student Ambassador: Audrea Huang

BOW Program Coordinator: Jamie Engle

BOW Presidential Innovation Grants 2012-2019

The Presidential Innovation Grants offer an opportunity for members of the BOW Three College Collaboration – faculty, staff, and students – to submit project proposals related to the enhancement of the collaboration.

96

Applications

58

Awards

Awards by Type

16

Faculty

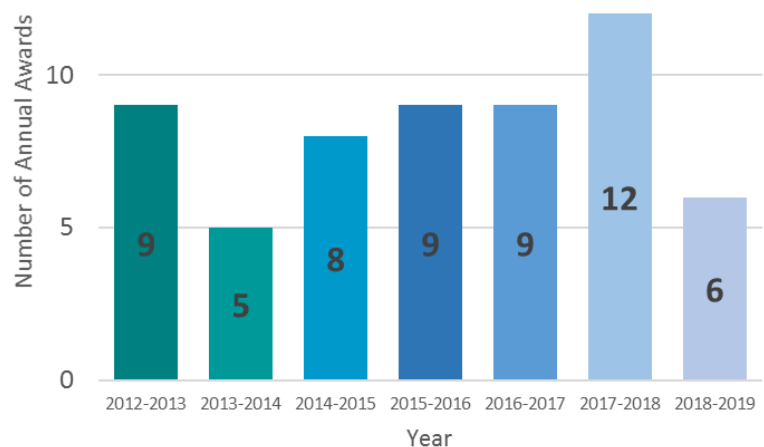
21

Staff

21

Students

Total Amount
Awarded:
\$169,670



Fall 2018 Presidential Innovation Grants



Award Recipients

BOW Women's Club Ice Hockey Team

A BOW Women's Club Ice Hockey team will be established for women at all three colleges. This will allow women from all three schools to gather in an athletic environment that will foster teamwork and promote the qualities of perseverance, responsibility, physical endurance, and commitment. The club will focus on both an introductory component and a competitive program, while fostering a connection between women at all three schools.

Refinement & Integration of Making and Fabrication across BOW (Part I)

This project will develop a visual, annotated representation of the tools available in Babson's Weissman Foundry, the Olin Shop, and the Wellesley We-Lab & Knapp Center with consistent identity and style across the three campuses. This project will be the starting point of a deeper collaboration across the 3 campuses to align training and safety protocols.

Care Connect

Babson College and Wellesley College Counseling and Wellness Staff will collaborate to enhance and streamline the referral process for students seeking mental health care from community providers for psychotherapy and psychiatry. Counseling center staff at Babson and Wellesley will use *ThrivingCampus* to pool efforts to engage more mental health clinicians in the community and bridge the gap described between our students and off-campus resources. Olin College students will also be able to access the shared directory in effort to streamline the off-campus referral program.

Artificial Intelligence & Machine Learning

Artificial intelligence, machine learning, and data science are areas of innovation that have been rapidly evolving in recent years. Their impact is not only felt in the computing and data spheres, but also throughout business and the humanities. As AI becomes more integrated into our day-to-day life, there is a need for a more comprehensive pedagogical approach to Artificial Intelligence across the three institutions.



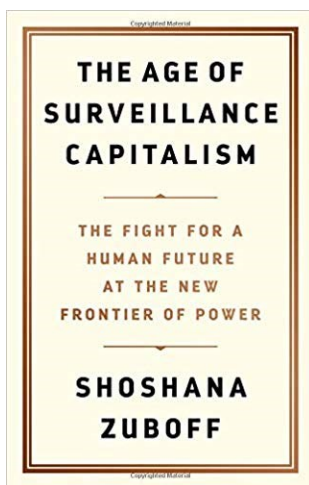
In October 2018, the Provosts held a meeting in the Weissman Foundry to discuss what is currently being done on the three campuses in the AI space.



After an enthusiastic response to the program, the Provosts, together with the BOW Faculty Steering Committee, made a special call for creative proposals to build connections between the colleges at the intersection of the areas of Artificial Intelligence, Machine Learning, Data Science, and their Societal Impact. Applicants were encouraged to consider innovative, collaborative approaches to enhance student learning in the AI space across the three Colleges.

A second meeting was held in February 2019 where participants developed proposal ideas for the Initiative. Out of this meeting, three groups applied for and received **AI Presidential Innovation Grants**. These three groups gave short presentations on their activities at a May BOW Social.

Spring 2019 Presidential Innovation Grants: A Special Call for Initiatives in Artificial Intelligence, Machine Learning, Data Science, and Societal Impact

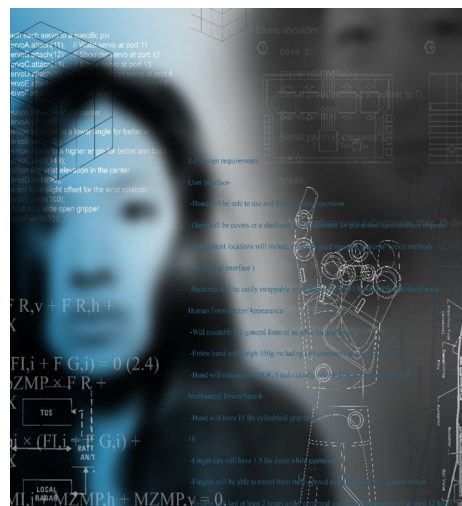


Intellectual Community Building through Reading, Discussion, and Public Guest Lectures

This project will bring together faculty from all three institutions to read and discuss recent publications about the impact of advances in and media coverage of AI, Machine Learning, and Data Science (i.e. *The Age of Surveillance Capitalism: The Fight for a Human Future at the New Frontier of Power* by Shoshana Zuboff). This faculty seminar will facilitate the sharing of knowledge and ideas to be incorporated into courses across disciplines. The project will culminate in bringing the authors to one of the campuses for public lectures and subsequent conversations with members of the BOW community.

Theatrical Representations of Artificial Intelligence: The Intelligent Design of Jenny Chow as a Common Text for the BOW Community

This project is aimed at fostering a shared text across all three BOW campuses. That text, centrally focused on artificial intelligence, is the play *The Intelligent Design of Jenny Chow*, which will be produced at Babson in October 2019. The funding will be used to hire a dramaturg to produce high quality curricular materials and two speakers to lead talk-back after one of the performances. The hope is that the performances and the accompanying curricular material created by the dramaturg will support widespread connections between the play, courses, and curricular goals at all three BOW institutions.



BOW-Community "Future Hack" and Curated Mixed Media Installation on Artificial Intelligence



This project will bring together faculty and students from varied disciplines to explore and visualize the future of emerging AI technologies through a "Future Hack." The "Future Hack" will result in a mixed-media installation in the Weissman Foundry highlighting the predictions and opportunities for AI in the future that are discussed during the Hack.

Faculty & Staff

Faculty and Staff Socials



BOW held two Faculty and Staff Socials during the 2018-19 school year. These two events brought together faculty and staff from all three communities for conversation and connections.

Sprechen Sie Deutsch?



BOW sponsored two casual gatherings for German speaking members of the BOW community. Faculty, staff, and students got together for lively German conversation.



Faculty & Staff

Curricular Innovation Fellows

The goals of this program are to cultivate creative and collaborative teaching across Babson, Olin, and Wellesley Colleges with the ultimate goal of generating innovative new courses and teaching formats across the three institutions.

Faculty who participate in this program will be known as BOW Curricular Innovation Fellows. Each BOW Curricular Innovation Fellow will be awarded a \$3,000 stipend for their curriculum development work.

No applications were submitted this year, but we are eager for such applications next year.

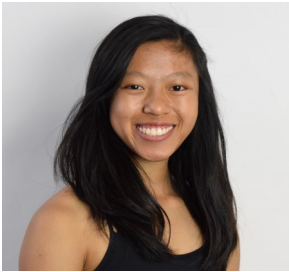
Faculty Guest Lecture Network

Need help teaching a specific topic in your course or program? Want to connect with other faculty members who might be able to help? Then search the BOW Guest Lecture Network. This searchable database will help you identify BOW faculty members with certain areas of expertise who could enhance the learning and share knowledge within you course.

This is a growing community resource: **Join the Network** today by visiting <https://bow3colleges.org/faculty-guest-lecture-network>.

Students

2018-19 BOW Student Ambassadors



Audrea Huang
Wellesley College



Eric Li
Babson College



Anusha Datar
Olin College

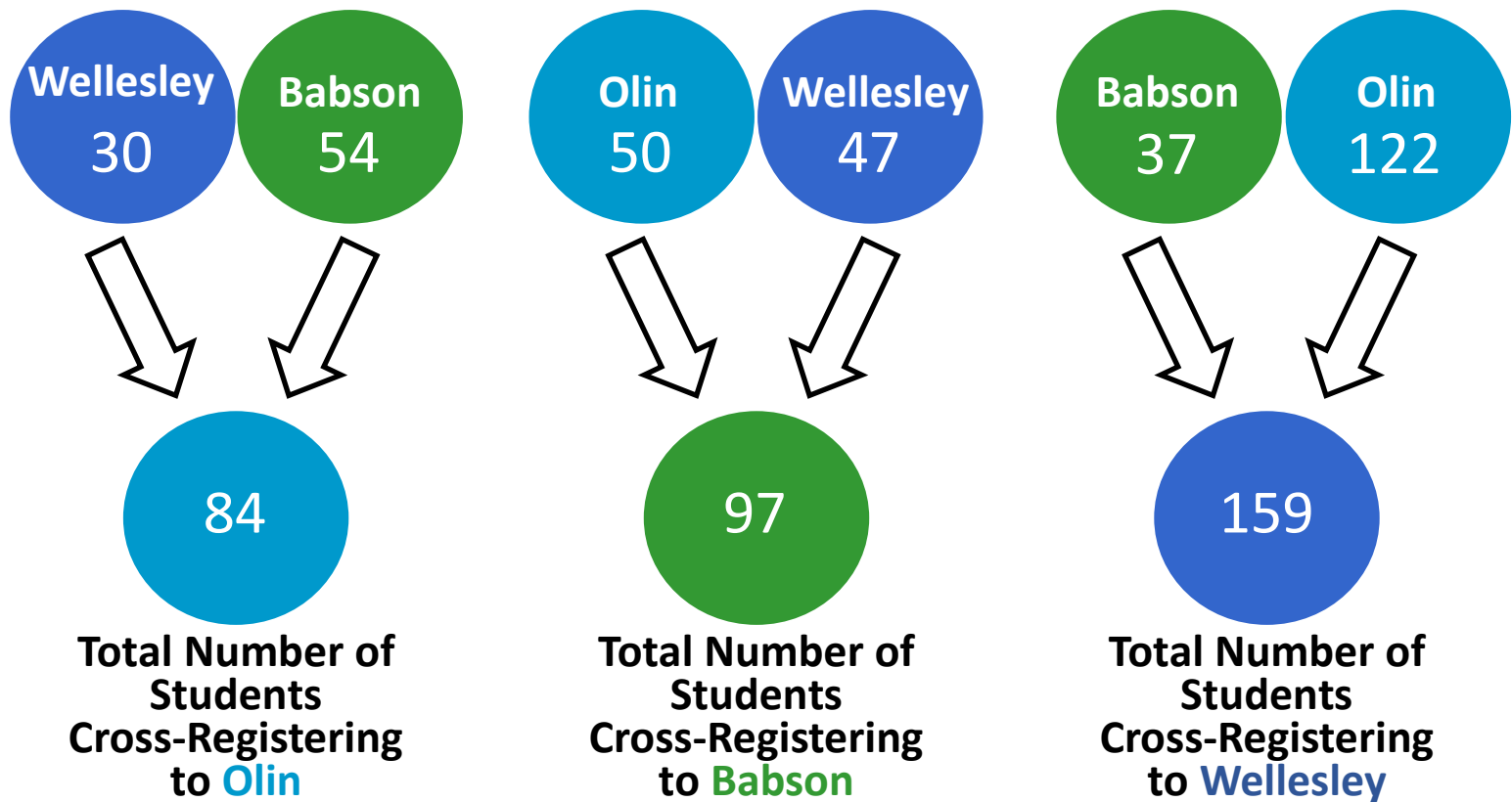
The BOW Student Ambassadors are elected student leaders from each BOW campus. The Ambassadors serve as an enabling group to initiate, support, and promote interaction and cooperation among the institutions and their students. The Ambassadors can submit proposals to the BOW Program Coordinator and/or the BOW Faculty Steering Committee with recommendations for improved cooperation.

The BOW Student Ambassadors held four events that brought together students from all three campuses. The events included a cross-campus **Scavenger Hunt** to acclimate students to all three campuses, a **Winter Study Break** at the Weissman Foundry, **BOW SLAC** (Stay Late and Create) at Olin, and a **Make-Your-Own Sushi** event. All four events provided great opportunities for students to connect and have fun!

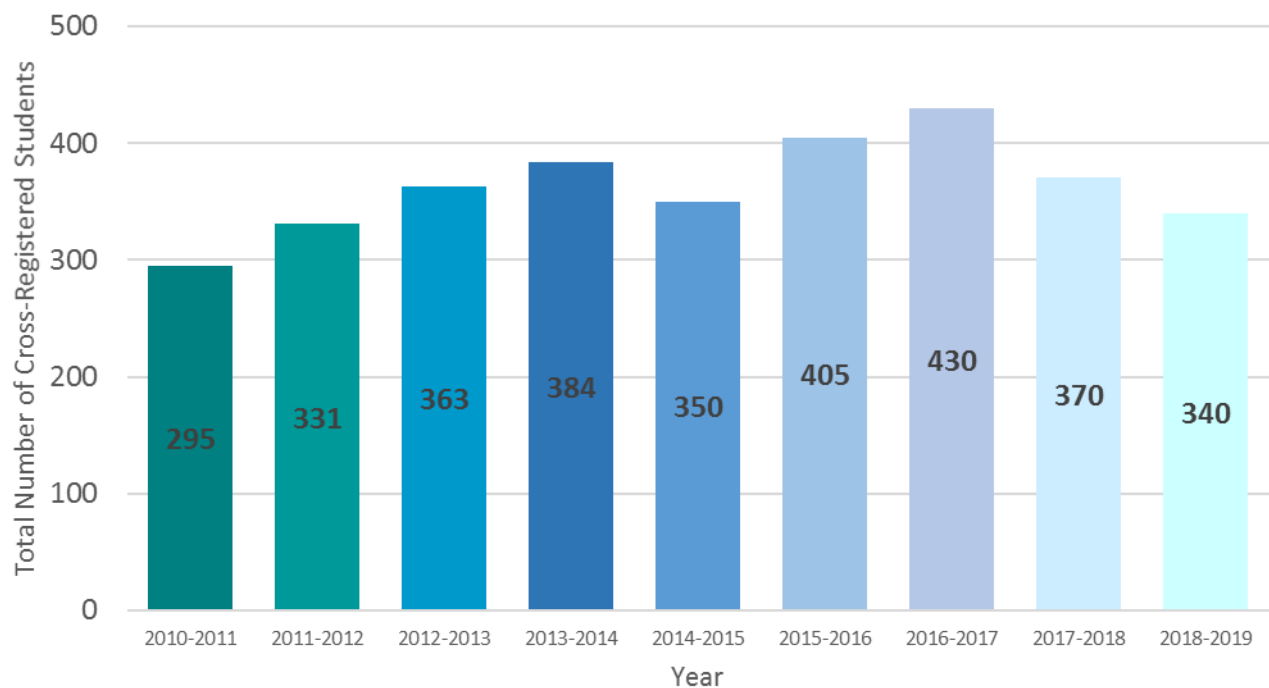


New this year, the BOW representatives for the 2019-20 school year have been selected and have begun planning for the upcoming school year. They will have a presence at Orientation and Student Organization Fairs. Keep an eye out for exciting student programs in the fall!

Cross-Registration 2018-19



Cross-Registration 2010-2019



Certificate Programs

Sustainability Certificate

The Sustainability Certificate Program seeks to educate students to make use of the skills, tools, and concepts from the liberal arts, business, and engineering to address environmental challenges and work to move individuals and society to more sustainable practices.

There are 3 components to the 5 course certificate program:

- Introductory Course
- Synthesis Course
- Three Electives from the Approved Certificate Program Electives List

Highlights from the program this year:

- 45 students enrolled in the Introductory Course.
- 5 students completed a project for the Needham Recycling and Transfer Station's composting operation as part of the Synthesis Course.
- **6 students completed the Program in May; 1 will complete the Program in December.**

Engineering Certificate

Olin offers a Certificate in Engineering Studies for students at Wellesley College and Babson College who wish to gain a foundation in engineering content, skills, and perspectives, as well as some depth in one engineering field. The structure of this certificate gives students the flexibility to create course plans that meet their interests and needs. Each student proposes and successfully completes their own set of five courses based on a set of guidelines and approved by Olin faculty.

In 2019, 5 BOW students received Engineering Certificates.

Weissman Foundry



The Weissman Foundry is a newly-launched strategic venture between Babson, Olin, and Wellesley Colleges (BOW). The Foundry is an inclusive space where innovators-of-all-kinds from the BOW Community can collaborate and create. The Foundry serves as an effort to promote projects of all kinds, including community-building events, entrepreneurial prototyping, art-making, and experiential education initiatives, among others.

The Foundry employs 30 student SCOUTS from all three institutions. The SCOUTS help to create a safe and inclusive space and are able to train and assist fellow students on the use of the equipment in the Foundry.

This year, the Foundry held many three college events including the *"Untitled" Expression Apparel Show* featuring the work of BOW designers, a XBOW Design Workshop, and BOW Blend events aimed at bringing together students with a shared thematic interest to meet and discuss their ideas at the Foundry.

BOW and the Foundry look forward to collaborating on more events in the coming year.

BOW Shuttle Schedule

Days: Monday-Friday; Saturday (3 P.M. – 12 A.M.) **Service by:** JFK Transportation, Inc., 508-653-4500

All times listed are when the shuttle departs. Please arrive at least five minutes prior to the scheduled departure time.

Wellesley - Campus Center	Wellesley Chapel	Olin - East Hall	Babson - Hollister Parking Lot	Wellesley Chapel	Wellesley - Campus Center
7:40 A.M.	7:42 A.M.	7:52 A.M.	7:55 A.M.	8:05 A.M.	8:07 A.M.
8:10 A.M.	8:12 A.M.	8:22 A.M.	8:25 A.M.	8:35 A.M.	8:37 A.M.
8:40 A.M.	8:42 A.M.	8:52 A.M.	8:55 A.M.	9:05 A.M.	9:07 A.M.
9:10 A.M.	9:12 A.M.	9:22 A.M.	9:25 A.M.	9:35 A.M.	9:37 A.M.
9:40 A.M.	9:42 A.M.	9:52 A.M.	9:55 A.M.	10:05 A.M.	10:07 A.M.
10:10 A.M.	10:12 A.M.	10:22 A.M.	10:25 A.M.	10:35 A.M.	10:37 A.M.
10:40 A.M.	10:42 A.M.	10:52 A.M.	10:55 A.M.	11:05 A.M.	11:07 A.M.
11:10 A.M.	11:12 A.M.	11:22 A.M.	11:25 A.M.	11:35 A.M.	11:37 A.M.
11:40 A.M.	11:42 A.M.	11:52 A.M.	11:55 A.M.	12:05 P.M.	12:07 P.M.
LUNCH BREAK	LUNCH BREAK	LUNCH BREAK	LUNCH BREAK	LUNCH BREAK	LUNCH BREAK
12:40 P.M.	12:42 P.M.	12:52 P.M.	12:55 P.M.	1:05 P.M.	1:07 P.M.
1:10 P.M.	1:12 P.M.	1:22 P.M.	1:25 P.M.	1:35 P.M.	1:37 P.M.
1:40 P.M.	1:42 P.M.	1:52 P.M.	1:55 P.M.	2:05 P.M.	2:07 P.M.
2:10 P.M.	2:12 P.M.	2:22 P.M.	2:25 P.M.	2:35 P.M.	2:37 P.M.
2:40 P.M.	2:42 P.M.	2:52 P.M.	2:55 P.M.	3:05 P.M.	3:07 P.M.
3:10 P.M.	3:12 P.M.	3:22 P.M.	3:25 P.M.	3:35 P.M.	3:37 P.M.
3:40 P.M.	3:42 P.M.	3:52 P.M.	3:55 P.M.	4:05 P.M.	4:07 P.M.
4:10 P.M.	4:12 P.M.	4:22 P.M.	4:25 P.M.	4:35 P.M.	4:37 P.M.
4:40 P.M.	4:42 P.M.	4:52 P.M.	4:55 P.M.	5:05 P.M.	5:07 P.M.
5:10 P.M.	5:12 P.M.	5:22 P.M.	5:25 P.M.	5:35 P.M.	5:37 P.M.
5:40 P.M.	5:42 P.M.	5:52 P.M.	5:55 P.M.	6:05 P.M.	6:07 P.M.
6:10 P.M.	6:12 P.M.	6:22 P.M.	6:25 P.M.	6:35 P.M.	6:37 P.M.
6:40 P.M.	6:42 P.M.	6:52 P.M.	6:55 P.M.	7:05 P.M.	7:07 P.M.
7:10 P.M.	7:12 P.M.	7:22 P.M.	7:25 P.M.	7:35 P.M.	7:37 P.M.
7:40 P.M.	7:42 P.M.	7:52 P.M.	7:55 P.M.	8:05 P.M.	8:07 P.M.
8:10 P.M.	8:12 P.M.	8:22 P.M.	8:25 P.M.	8:35 P.M.	8:37 P.M.
8:40 P.M.	8:42 P.M.	8:52 P.M.	8:55 P.M.	9:05 P.M.	9:07 P.M.
9:10 P.M.	9:12 P.M.	9:22 P.M.	9:25 P.M.	9:35 P.M.	9:37 P.M.

Tuesday and Thursday evenings only

9:40 P.M.	9:42 P.M.	9:52 P.M.	9:55 P.M.	10:05 P.M.	10:07 P.M.
10:10 P.M.	10:12 P.M.	10:22 P.M.	10:25 P.M.	10:35 P.M.	10:37 P.M.
10:40 P.M.	10:42 P.M.	10:52 P.M.	10:55 P.M.	11:05 P.M.	11:07 P.M.
11:10 P.M.	11:12 P.M.	11:22 P.M.	11:25 P.M.	11:35 P.M.	11:37 P.M.

Stay Connected

2019-20 BOW Contact Information

Faculty Steering Committee:

Rick Clearly, Babson College
rcleary@babson.edu

Ben Linder, Olin College
benjamin.linder@olin.edu

Franklyn "Lyn" Turbak, Wellesley College
fturbak@wellesley.edu

Program Coordinator:

Jamie Engle
jengle@olin.edu

Student Ambassadors:

Julia Lin, Babson College
jlin3@babson.edu

Shreya Chowdhary
schowdhary@olin.edu

Audrea Huang
ahuang6@wellesley.edu



The BOW Collab



@bow3college



@bow3college

Visit the UPDATED website at

www.bow3colleges.org