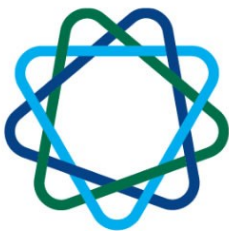


ANNUAL REPORT 2020



BABSON OLIN WELLESLEY
THREE COLLEGE COLLABORATION





Executive Summary

Sustainability Certificate Program

We have made the difficult decision to conclude the Sustainability Certificate program. The landscape of Sustainability on the three campuses has changed dramatically since the program was launched in Fall 2011. As the number of students, faculty, and staff who are actively engaged in sustainability work grows on all three campuses, the opportunities to get involved on their home campus and to study the field have multiplied. We learned a lot from this program and look forward to seeing what new three-college programs might arise in the future.

Cross-Registration

Cross-registration remains popular across the three campuses. 368 students cross-registered during the 2019-20 school year, representing an increase over the previous year. Olin students continue to cross-register at higher rates than Wellesley and Babson students. The BOW Faculty Steering Committee is investigating ways to make students more aware of and reduce the barriers to cross-registration.

Teaching and Learning

Over 60 faculty and staff members participated in a BOW Teaching and Learning Workshop focused on Universal Design for Learning (UDL). The day included a keynote address by Dr. Elizabeth Hartmann and presentations from 11 members of the BOW community. Participants enjoyed the hands on nature of the workshop, learning from their peers, and meeting new members of the BOW community. We hope to hold another workshop in 2022.

Communities of Practice

New this year, BOW brought together nine communities of practice across the three institutions. Groups enjoyed meeting their colleagues at other institutions, sharing information, problem solving, and planning three-college events.

Marketing BOW

This year, BOW continued their marketing efforts across the three colleges. The marketing campaign began with a poster and post card campaign throughout the residence halls and campuses. It continued with an increased presence during Undergraduate Orientation and Activities Fairs across the campuses in hopes of making incoming students aware of all that BOW has to offer. Additionally, BOW began sending out a monthly *BOW Digest* to all BOW faculty, staff, and students. The Digest advertised programs, opportunities, and events open to the community.

BOW Leadership 2019-20



President: Stephen Spinelli

Provost: Mark Rice

Faculty Representative: Rick Cleary

Student Ambassador: Julia Lin



Olin College
of Engineering

President: Richard Miller

Interim Provost: Mark Somerville

Faculty Representative: Ben Linder

Student Ambassador: Shreya Chowdhary



President: Paula Johnson

Provost: Andrew Shennan

Faculty Representative: Lyn Turbak

Student Ambassador: Audrea Huang

BOW Program Coordinator: Jamie Engle

Presidential Innovation Grants

Fall Award Recipients

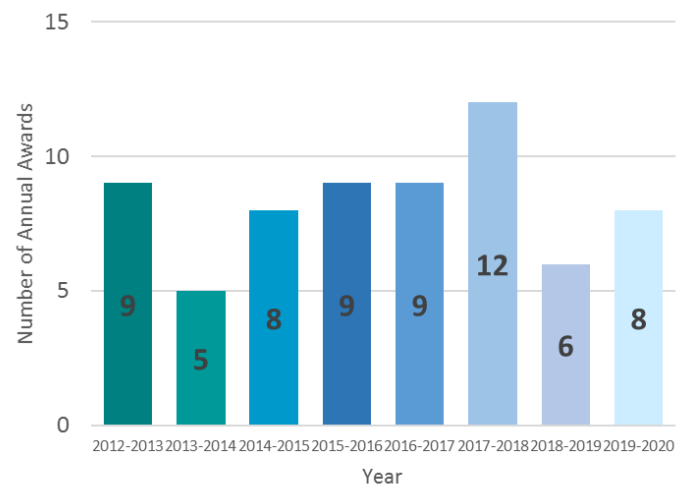


Spring Award Recipients



Award 2012-2020

Total Amount
Awarded:
\$195,970



Fall 2019 Presidential Innovation Grant Award Recipients

Large October Event (L.O.V.E.)

The Large October Event (LOVE) is a frisbee golf tournament, spread across the three colleges sponsored by the Weissman Foundry. Each college will have four frisbee golf hoops, and by sending each team to visit all three colleges, we hope students will have the chance to engage with different campuses and students. LOVE will facilitate deeper connectivity between the three colleges through a fun challenging game that requires BOW students to physically be on each other's campuses and play alongside each other.

Edison House

Our goal is to transform the under-utilized Edison House at Olin College into the Edison Arts Collective, an arts hub to serve the BOW community. Several of the rooms will be modified and used as studio space for art-involved faculty, staff, and students of the BOW institutions. Other communal spaces in the house will be used as gallery space, featuring rotating exhibitions from BOW community members and other local artists. The members of the Edison Arts Collective will host regular open studios, gallery shows, and community activities such as "dinner with the artists" designed to strengthen bridges between the art programs of all three institutions, as well as engaging with the greater BOW collegiate community and the local communities of Needham and Wellesley.

Wellesley Aspire Financial Literacy Series in partnership with the Babson Financial Literacy Project

The Wellesley Aspire Financial Literacy Series in partnership with the Babson Financial Literacy Project is designed to help our students acquire the necessary knowledge and habits for long-term financial prosperity and independence. Babson faculty have developed 22 case studies to teach important financial skills to young adults in a community setting. While exploring real-world financial situations, participants hone their problem-solving abilities and build lifelong strategies for budgeting, building credit, saving for retirement, and more. We plan to partner to bring the curriculum to each of our own students and across the campuses.

Offshore Aquaculture and the Future of New England Fisheries

Consumer demand for marine seafood is estimated to increase 70% by 2030, and this demand will be met through offshore aquaculture rather than wild-caught fisheries. The growth of emerging industry in New England is limited by concerns over ecological impacts of offshore farming practices. This demand for seafood, combined with the ecological concerns over coastal seafood farming, provides a unique opportunity for technology development, entrepreneurial thinking, and understanding of the social context by Olin, Babson, and Wellesley College students. We propose to host a panel discussion to foster critical discussion and education about this emerging industry. To do this, we will invite expert panelists from industry, academia, fisheries trade groups, and regulatory bodies, as well as the BOW academic community at large, to the Weissman Foundry to discuss a range of topics related to offshore aquaculture growth. Following the panel discussion, which will include a robust question and answer session, we will provide food and drink to facilitate further conversation and networking among panelists and attendees.

BOW Substance-Free Student Community Building Group

This grant will allow the students who are committed to living substance-free to build community within and between institutions. By building a strong BOW community for students committed to living substance-free, students at the individual BOW institutions who do not currently access services and support will be more likely to do so. The foundation of the grant funded program will consist of weekly social gatherings during which students can build connections and provide each other with critical peer support. In addition, the students will be able to plan several small and one large event to take place on Marathon Monday, a traditionally high-risk substance use day for students of all three institutions on Wellesley College's campus.



Spring 2020 Presidential Innovation Grant Award Recipients

BOW DataFest

Babson, Olin, and Wellesley are jointly planning the third bi-annual BOW American Statistical Association DataFest, to be held at Wellesley on April 3-5, 2020. This event is coordinated at locations all over the country and is similar to a computing hackathon, where teams of students work throughout a weekend to solve a problem. At DataFest, students gather for 2.5 days to explore and develop insights about a large, complex data set that is kept a secret until the event. Throughout this time, faculty, staff, and alums from all three colleges circulate to provide advice and support. The goals of the BOW DataFest are to promote statistics and data science; to foster students' data analysis, statistical, and computational skills; to recognize excellent student work; and to connect the data science and statistics communities at our colleges. Our participation in this national event also brings visibility to the BOW Collaboration.

Faculty Grant Writing Seminar

Faculty from Babson, Olin, and Wellesley will be invited to participate in a three-college faculty grant writing and proposal writing workshop. The goals of the program are to encourage faculty to consider external research funding and become more successful with each submission. The program will now be held virtually in June 2020.

BOW Amateur Radio Ground Station

Amateur radio is a global hobby and service that brings people, electronics and communities together. This BOW team plans to build a ground station on the Olin campus as a means for (1) building community across the three campuses, (2) encouraging students to learn more about amateur radio, electronics and space and obtain their amateur radio license, and (3) volunteering to provide emergency relief services in the event of a disaster that impacts the college campuses and neighboring areas, as well as volunteering at Boston events like the Boston Marathon and Head of the Charles. The station will also be used to (1) contact astronauts on the International Space Station, an event we plan to promote widely across the three campuses and to (2) support university research projects pertaining to smallsats, cubesats, or balloons that need data downlinked or commands uplinked.



Artificial Intelligence & Machine Learning

During the 2018-2019 school year, BOW held several events and discussions centered around Artificial Intelligence, Machine Learning, Data Science, and their Societal Impact. In the spring of 2019, the Provosts, together with the BOW Faculty Steering Committee, made a special call for creative proposals to build connections between the colleges at the intersection of these important and exciting areas. Applicants were encouraged to consider innovative, collaborative approaches to enhance student learning in the AI space across the three colleges. Three groups applied for and received **AI Presidential Innovation Grants**. This year, two of the groups held successful events enjoyed by many on the three campuses.

The Intelligent Design of Jenny Chow

In October 2019, Beth Wynstra (Babson), Jon Adler (Olin), and Marta Rainer (Wellesley) directed and produced *The Intelligent Design of Jenny Chow*, a play centrally focused on Artificial Intelligence at the Empty Space Theater on the Babson Campus. Utilizing the BOW funds, the team hired a dramaturg who developed relevant course materials for the three colleges. The play became a common text for the BOW community and faculty from a variety of disciplines (i.e. Psychology, Marketing and Entrepreneurship, Machine Learning). Over ten courses across the three colleges incorporated the play into their syllabi during the Fall semester.

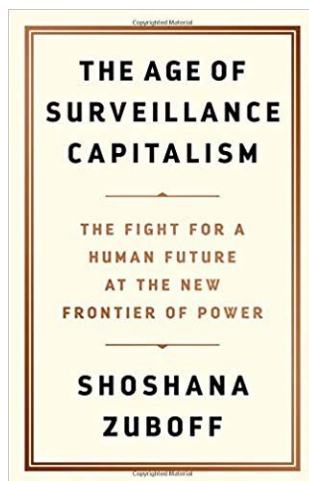


Artificial Intelligence and Machine Learning

***The Age of Surveillance Capitalism* Book Club and Lecture by author Shoshana Zuboff**



In the fall of 2019, Eni Mustafaraj (Wellesley), Julie Walsh (Wellesley), Clare Gillan (Babson), Joe Ricciardi (Babson), and Erhardt Graeff (Olin) organized a faculty/staff book club to discuss recent books on the societal implications of current technologies powered by Artificial Intelligence, Machine Learning, and Data Science. The book club met three times throughout the year across the campuses and discussed Shoshana Zuboff's *The Age of Surveillance Capitalism: The Fight for a Human Future At the New Frontier of Power*.



On February 25, 2020, President Johnson, President Spinelli, and President Miller welcomed author, Shoshana Zuboff, to the three campuses for a series of talks and gatherings. Students, faculty, and staff on all three campuses had the opportunity to sit down with Dr. Zuboff to discuss her book and its implications. The day culminated with a public lecture with over 700 members of the campus and local communities attending. Zuboff's visit was a true collaboration between the three schools and indicates the continued interest in artificial intelligence, machine learning, and data science on the three campuses. We look forward to more collaborative events around these topics in the future.



Teaching and Learning Workshop

Over 60 BOW faculty and staff members came together for the BOW Teaching and Learning Workshop focused on Universal Design for Learning (UDL) in January on the Babson campus.

Attendees participated in a variety of workshops and presentations, including a keynote by Lasell College [Associate Professor Dr. Elizabeth Hartmann](#) entitled “Finding the Emotional Core of Your Teaching” and lightning talks, lunchtime discussion groups, and breakout sessions led by members of the BOW community. Many participants also visited the Open Design Studio hosted by Dr. Hartmann and Wellesley’s Rebecca Darling, where they had the opportunity to begin designing a lesson, activity or course using UDL Principles.

Prior to the workshop, BOW awarded a scholarship for four members of the community to attend a symposium on UDL in Cambridge. After the symposium, Daryl Bullis and Alexandra Shadid from Babson, Adva Waranyuwat from Olin, and Rebecca Darling from Wellesley, in conjunction with the BOW Faculty Steering Committee and Program Coordinator, planned the one-day teaching and learning conference from start to finish. They were integral to the success of the program, developing the format and content for the programs, planning and executing the logistical aspects of the workshop, and delivering some of the presentations. The model of working with a core group from each of the colleges to plan the event is one we want to repeat. The entire planning committee enjoyed working together and getting to know individuals from the other campuses. It was a true collaborative effort and their hard work was noticed by all of the participants.

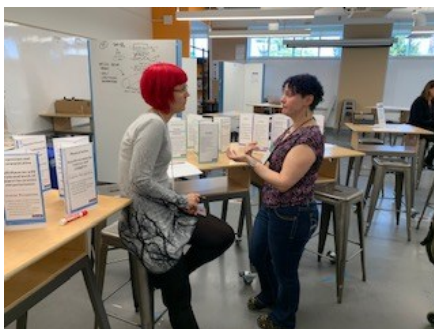
We had hoped to offer UDL follow up sessions throughout the spring semester, but have shifted these plans to the summer and fall of 2020.



Keynote Activity



Lightning Talk



UDL Design Studio



Lunch Discussion Groups

Teaching and Learning Workshop

BOW Presenters

Babson College

Rick Cleary
Dave Foscaldo
Eric Palson
Alexandra Shadid

Olin College

Sarah Spence Adams
Benjamin Linder
Sam Michalka
Alisha Sarang-Sieminski
Adva Waranyuwat

Wellesley College

Rebecca Darling
Sarah Posiask

Participant Comments

I will be incorporating more transparent learning goals for the assignments, more variety in how students review background material, and self reflections.

I think the biggest takeaway from this event is that teaching isn't just about getting information to the most students possible, but figuring out the best way to get information to individual students.

Thank you so much for an awesome workshop--you should take this show on the road for all BOW Professors.



Faculty & Staff

Faculty and Staff Socials



BOW held two Faculty and Staff Socials during the 2019-20 school year. These two events brought together faculty and staff from all three communities for conversation and connections.

Communities of Practice

New this year, BOW brought together nine communities of practice across the three institutions. Groups enjoyed meeting their colleagues at other institutions, sharing information, problem solving, and planning three college events. For example, the BOW Library Directors met and planned two large-scale workshops where their teams came to meet one another, share ideas, address challenges, and explore areas of collaboration between the libraries.

Additionally, the leaders of the BOW Dining Services collaborated on a weekly basis to plan the *Three College Throwdown*, a three-college cooking competition that was planned for April 2020. Presidents Spinelli, Miller, and Johnson were slated to judge the competition and students, faculty, and staff were all excited about attending the event. We hope to reschedule this event in the future. In

the course of planning this event, the chefs shared important information about vendors and the sharing of underutilized equipment. Most impressively, in the face of the pandemic, the chefs expressed a desire to share information and resources as they engaged in their pandemic planning.

If your department is interested in getting together with their counterparts at the other BOW schools, please reach out to Jamie Engle.

food
intercultural
registered
study abroad
residential life
library
student services
campus life
stammtisch

Faculty & Staff

Curricular Innovation Fellows

The goals of this program are to cultivate creative and collaborative teaching across Babson, Olin, and Wellesley Colleges with the ultimate goal of generating innovative new courses and teaching formats across the three institutions.

Faculty who participate in this program will be known as BOW Curricular Innovation Fellows. Each BOW Curricular Innovation Fellow will be awarded a \$3,000 stipend for their curriculum development work.

No applications were submitted this year, but we are eager for such applications next year.

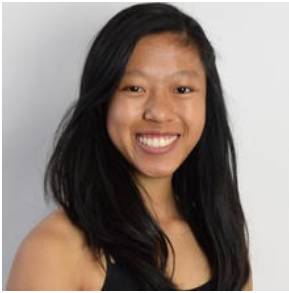
Faculty Guest Lecture Network

Need help teaching a specific topic in your course or program? Want to connect with other faculty members who might be able to help? Then search the BOW Guest Lecture Network. This searchable database will help you identify BOW faculty members with certain areas of expertise who could enhance the learning and share knowledge within you course.

This is a growing community resource: **Join the Network** today by visiting <https://www.bow3colleges.org/faculty-guest-lecture-network> .

Students

2019-20 BOW Student Ambassadors



Audrea Huang
Wellesley College



Julia Lin
Babson College



Shreya Chowdhary
Olin College

The BOW Student Ambassadors are elected student leaders from each BOW campus. The Ambassadors serve as an enabling group to initiate, support, and promote interaction and cooperation among the institutions and their students. The Ambassadors can submit proposals to the BOW Program Coordinator and/or the BOW Faculty Steering Committee with recommendations for improved cooperation.

The BOW Student Ambassadors held four events that brought together students from all three campuses. The events included a **Welcome Back Movie and Ice Cream Event**, **Cross-Registration Panels** on each campus, **BOW Ice Skating**, and the annual **Make-Your-Own Sushi** event.

Unfortunately, many events the Ambassadors were planning, including a **Boating Event** on the Wellesley College lake and the **Three College Throwdown** cooking event, were cancelled due to COVID-19. We look forward to planning more events next year.



Students

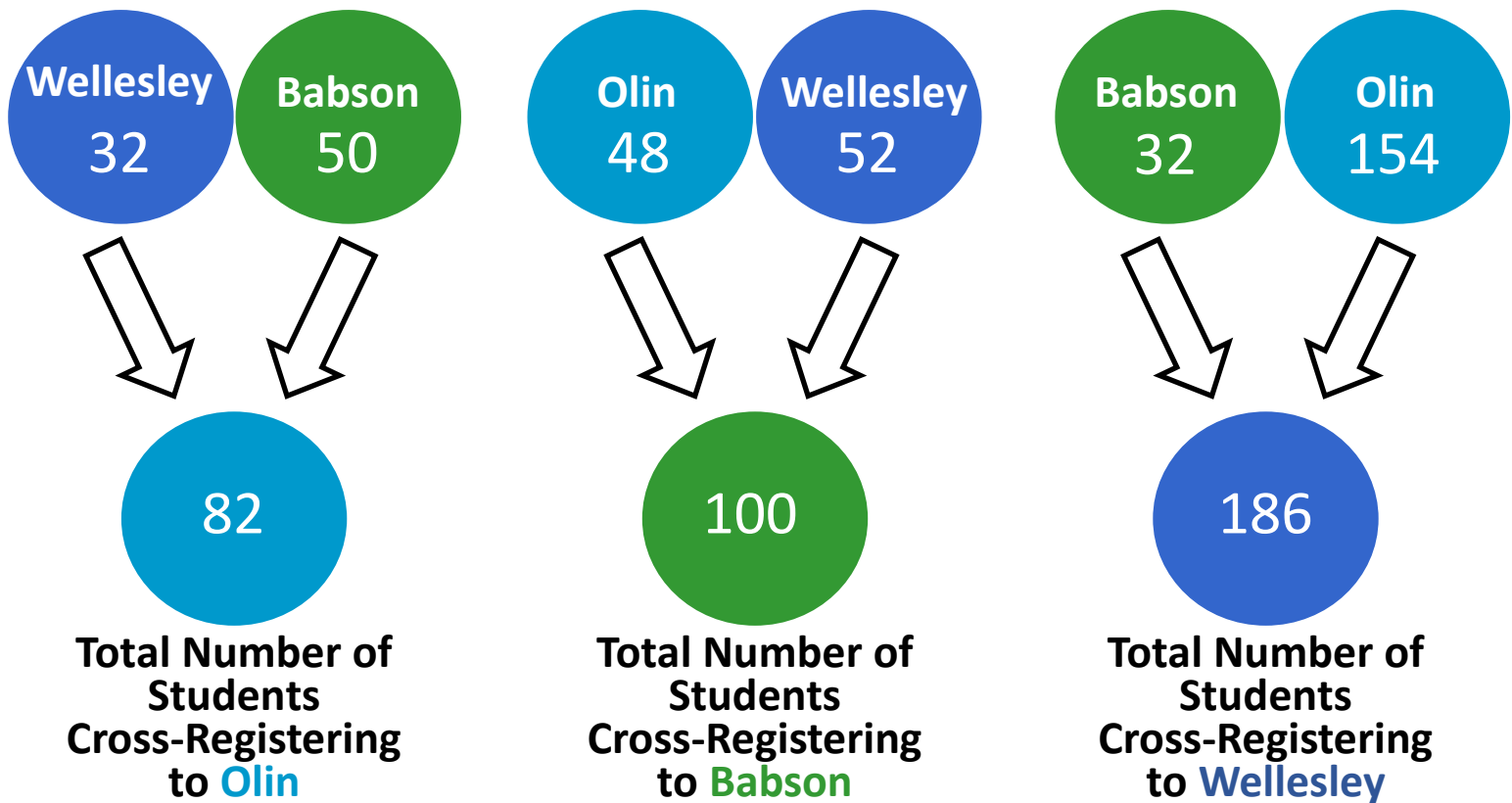
BOW Student Programming Fund

This year, BOW introduced a new funding opportunity for students—the Student Programming Fund. The purpose of the fund is to enhance collaboration and socialization between students on the Babson, Olin, and Wellesley campuses through student-initiated programming, activities, and experiences. Events should have a positive impact on the BOW campuses, be free and open to all students, and alcohol free.

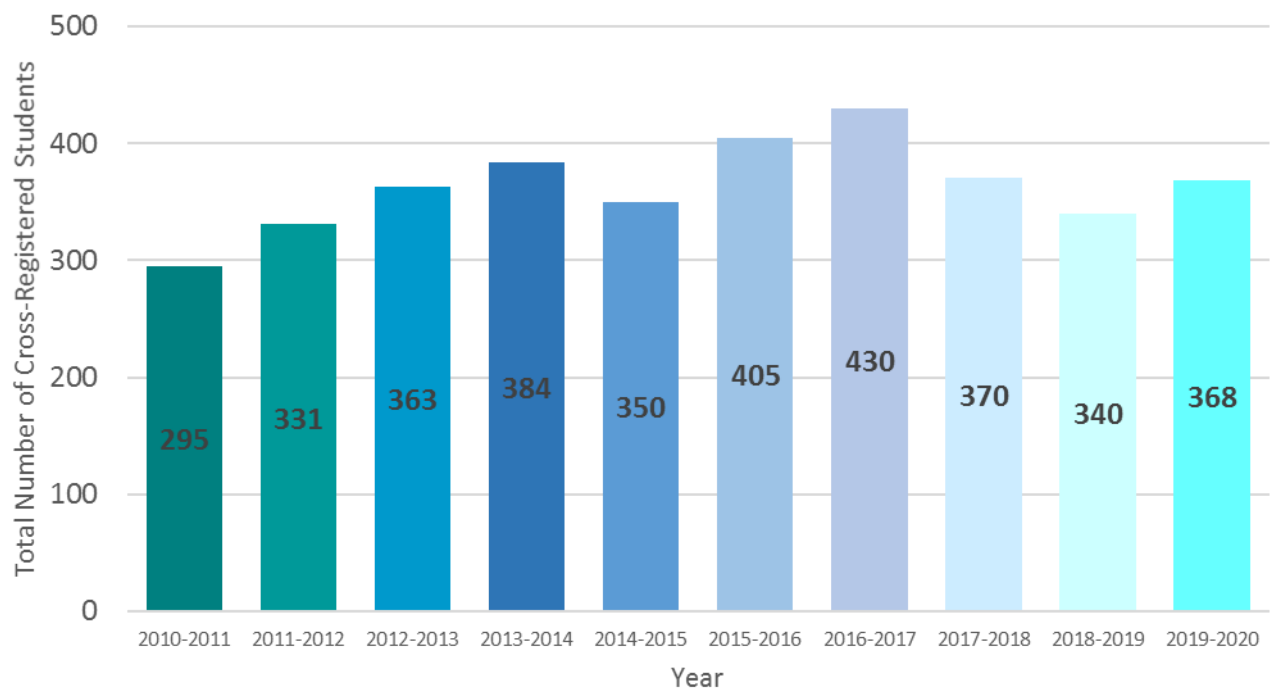
In its inaugural year, the Student Programming Fund funded the BOW Figure Skating Club for a night of ice skating at the Babson Skating Rink. The event sold out quickly and helped generate interest in this newly founded three-college student organization.



Cross-Registration 2019-20



Cross-Registration 2010-2020



Certificate Programs

Sustainability Certificate

Since its launch in Fall 2011, the Babson-Olin-Wellesley Sustainability Certificate program has offered the opportunity to engage in cross-disciplinary learning across campus cultures through collaborative curricular experiences and project-based courses. Faculty and staff have worked together to create a community passionate about teaching and practicing sustainability.

In the past decade, the landscape has also changed. Wellesley has continued to grow its Environmental Studies department, Babson has introduced a Sustainability concentration, and increasing numbers of Olin students complete self-designed majors in sustainability. As the number of students, faculty, and staff who are actively engaged in sustainability work grows on all three campuses, the opportunities to get involved and to study the field have multiplied. At the same time, we have learned a great deal about what works best to teach, inspire, and connect across the three campuses from running the Certificate program.

Therefore, we have made the difficult decision to conclude our Sustainability Certificate program. We increasingly find that our aspirations are outgrowing the structures we put in place ten years ago and we want to make space for new collaborations to emerge. We have a great deal of learning and success on which to build, and we look forward to seeing what new efforts might arise. We are proud of what we have been able to accomplish together and grateful to everyone who has engaged with and contributed to the program.

Students who have already taken the Introduction to Sustainability course are still eligible to complete the BOW Sustainability Certificate. Concluding the certificate program does not reflect a reduced interest in sustainability at the BOW schools; on the contrary, so much new sustainability programming has flourished, along with increased interest, that we believe new efforts can better serve our needs. There are many additional ways to study sustainability on all three campuses, as well as ways to get involved beyond the classroom:

- Babson has a sustainability concentration that students can opt into: <https://www.babson.edu/academics/undergraduate-school/concentrations/environmental-sustainability/>
- Olin offers the opportunity to create an Engineering with Sustainability concentration.
- Wellesley has an Environmental Studies department, with both a major and a minor offered in this subject: <https://www.wellesley.edu/environmentalstudies/>
- All three schools offer a number of sustainability-related courses, many of which can be found in the list of approved certificate electives: https://www.bow3colleges.org/files/bow-3colleges/files/approved_sustainability_electives_2020-03-04.pdf

Certificate Programs

Engineering Certificate

Olin offers a Certificate in Engineering Studies for students at Wellesley College and Babson College who wish to gain a foundation in engineering content, skills, and perspectives, as well as some depth in one engineering field. The structure of this certificate gives students the flexibility to create course plans that meet their interests and needs. Each student proposes and successfully completes their own set of five courses based on a set of guidelines and approved by Olin faculty.

In 2020, 5 BOW students received Engineering Certificates, 4 from Babson and 1 from Wellesley.

Weissman Foundry



The Weissman Foundry is a newly-launched strategic venture between Babson, Olin, and Wellesley Colleges (BOW). The Foundry is an inclusive space where innovators-of-all-kinds from the BOW Community can collaborate and create. The Foundry serves as an effort to promote projects of all kinds, including community-building events, entrepreneurial prototyping, art-making, and experiential education initiatives, among others.

The Foundry employs 30 student SCOUTS from all three institutions. The SCOUTS help to create a safe and inclusive space and are able to train and assist fellow students on the use of the equipment in the Foundry.

BOW and the Foundry look forward to collaborating on more events in the coming year.

BOW Marketing

This year, we focused on marketing the consortium to students, faculty, and staff to create a more cohesive BOW community. Efforts included a monthly newsletter, stronger social media presence, a poster campaign, and increased presence at key beginning of the year events.

BOW Three College Collaboration

JULY 2019
NEWSLETTER

ANNUAL REPORT
AI UPDATE

FACULTY STEERING COMMITTEE UPDATE
BOW SCHOLARSHIP--UDL CONFERENCE
CURRICULAR OPPORTUNITY

In the summer 2019, BOW began sending out a monthly BOW Digest to faculty, students, and staff on the three campuses. The Digests highlight events, programs, and opportunities that are open to members of the three campus communities.

BOW posters were hung in high traffic area and in each of the undergraduate residence halls on all of the campus.



BOW Highlights



Cross Registration

Take courses at any of the three institutions to expand your educational opportunities

BOW Shuttle

We operate a shuttle that runs Monday--Saturday between the three campuses

Social Connections

Meet students from all three schools, join new clubs and organizations, and attend fun and exciting events

Sustainability Certificate Program

Earn an interdisciplinary three-college certificate in Sustainability

Check us out on Instagram @bow3colleges

The BOW Collab

@bow3college

bow3college

bow3colleges.org

BOW welcomed first year students and their families during campus resource fairs on the first day of Orientation and at student organization fairs.

BOW Shuttle Schedule

Days: Monday-Friday; Saturday (3 P.M. – 12 A.M.) **Service by:** JFK Transportation, Inc., 508-653-4500

All times listed are when the shuttle departs. Please arrive at least five minutes prior to the scheduled departure time.

Wellesley - Campus Center	Wellesley Chapel	Olin - East Hall	Babson - Hollister Parking Lot	Wellesley Chapel	Wellesley - Campus Center
7:40 A.M.	7:42 A.M.	7:52 A.M.	7:55 A.M.	8:05 A.M.	8:07 A.M.
8:10 A.M.	8:12 A.M.	8:22 A.M.	8:25 A.M.	8:35 A.M.	8:37 A.M.
8:40 A.M.	8:42 A.M.	8:52 A.M.	8:55 A.M.	9:05 A.M.	9:07 A.M.
9:10 A.M.	9:12 A.M.	9:22 A.M.	9:25 A.M.	9:35 A.M.	9:37 A.M.
9:40 A.M.	9:42 A.M.	9:52 A.M.	9:55 A.M.	10:05 A.M.	10:07 A.M.
10:10 A.M.	10:12 A.M.	10:22 A.M.	10:25 A.M.	10:35 A.M.	10:37 A.M.
10:40 A.M.	10:42 A.M.	10:52 A.M.	10:55 A.M.	11:05 A.M.	11:07 A.M.
11:10 A.M.	11:12 A.M.	11:22 A.M.	11:25 A.M.	11:35 A.M.	11:37 A.M.
11:40 A.M.	11:42 A.M.	11:52 A.M.	11:55 A.M.	12:05 P.M.	12:07 P.M.
LUNCH BREAK	LUNCH BREAK	LUNCH BREAK	LUNCH BREAK	LUNCH BREAK	LUNCH BREAK
12:40 P.M.	12:42 P.M.	12:52 P.M.	12:55 P.M.	1:05 P.M.	1:07 P.M.
1:10 P.M.	1:12 P.M.	1:22 P.M.	1:25 P.M.	1:35 P.M.	1:37 P.M.
1:40 P.M.	1:42 P.M.	1:52 P.M.	1:55 P.M.	2:05 P.M.	2:07 P.M.
2:10 P.M.	2:12 P.M.	2:22 P.M.	2:25 P.M.	2:35 P.M.	2:37 P.M.
2:40 P.M.	2:42 P.M.	2:52 P.M.	2:55 P.M.	3:05 P.M.	3:07 P.M.
3:10 P.M.	3:12 P.M.	3:22 P.M.	3:25 P.M.	3:35 P.M.	3:37 P.M.
3:40 P.M.	3:42 P.M.	3:52 P.M.	3:55 P.M.	4:05 P.M.	4:07 P.M.
4:10 P.M.	4:12 P.M.	4:22 P.M.	4:25 P.M.	4:35 P.M.	4:37 P.M.
4:40 P.M.	4:42 P.M.	4:52 P.M.	4:55 P.M.	5:05 P.M.	5:07 P.M.
5:10 P.M.	5:12 P.M.	5:22 P.M.	5:25 P.M.	5:35 P.M.	5:37 P.M.
5:40 P.M.	5:42 P.M.	5:52 P.M.	5:55 P.M.	6:05 P.M.	6:07 P.M.
6:10 P.M.	6:12 P.M.	6:22 P.M.	6:25 P.M.	6:35 P.M.	6:37 P.M.
6:40 P.M.	6:42 P.M.	6:52 P.M.	6:55 P.M.	7:05 P.M.	7:07 P.M.
7:10 P.M.	7:12 P.M.	7:22 P.M.	7:25 P.M.	7:35 P.M.	7:37 P.M.
7:40 P.M.	7:42 P.M.	7:52 P.M.	7:55 P.M.	8:05 P.M.	8:07 P.M.
8:10 P.M.	8:12 P.M.	8:22 P.M.	8:25 P.M.	8:35 P.M.	8:37 P.M.
8:40 P.M.	8:42 P.M.	8:52 P.M.	8:55 P.M.	9:05 P.M.	9:07 P.M.
9:10 P.M.	9:12 P.M.	9:22 P.M.	9:25 P.M.	9:35 P.M.	9:37 P.M.

Tuesday and Thursday evenings only

9:40 P.M.	9:42 P.M.	9:52 P.M.	9:55 P.M.	10:05 P.M.	10:07 P.M.
10:10 P.M.	10:12 P.M.	10:22 P.M.	10:25 P.M.	10:35 P.M.	10:37 P.M.
10:40 P.M.	10:42 P.M.	10:52 P.M.	10:55 P.M.	11:05 P.M.	11:07 P.M.
11:10 P.M.	11:12 P.M.	11:22 P.M.	11:25 P.M.	11:35 P.M.	11:37 P.M.

Stay Connected

2020-21 BOW Contact Information

Faculty Steering Committee:

Davit Khachatryan, Babson College
dkhachatryan@babson.edu

TBD, Olin College

Franklyn "Lyn" Turbak, Wellesley College
fturbak@wellesley.edu

Program Coordinator:

Jamie Engle
jengle@olin.edu

Student Ambassadors:

TBD, Babson College

Sreenidhi Chalimagudu, Olin College
schalimadugu@olin.edu

TBD, Wellesley College



The BOW Collab



@bow3college



@bow3college

www.bow3colleges.org